



COOL AID
Tech Solutions LLP

A complete Solution for a controlled environment

All Type of Air Handling and Cleanroom Manufacturers



Let's talk
We'll listen to you
and discuss the
possibilities

Action
We'll put our new
technology to work



ABOUT US:

Set up in 2012, "COOLAID TECH SOLUTIONS LLP" has been one of the potent forces to reckon in the industry. We have always worked on full-scale production plan, which helps us to gain a strong foothold in the market. This has helped us to strengthen our stature as leading manufacturer, supplier and service provider for Industrial Products. Some of our offered products are Pass Box, Air Handling Unit and Cross Over Benches and many more. One of the major reason that we have tasted success in our short run lies mainly on the fact that we follow a well-defined and systematic production plan. This helps us to strategize and offer customized solutions for our esteemed set of clients'. Moving ahead, this positive approach has helped us to gain fairly strong foothold in the market. Our products find application in areas like pharmaceutical, biotechnology, health care, food processing and manufacturing of solar cells, to name a few.

We have got an ultra modern infrastructure, which houses latest machineries and technologically advanced equipment. These facilities have all the more added to our strength and worked on proportionally in accelerating our growth index. The production unit is well spread and presents a very neat and tidy look to the onlookers. What we have done is the entire unit is well segregated into different areas as per the production process, this not only gives a better control, at the same time help to take control of the situation in case of some eventuality.

Getting into quality we have the best of the quality control measures at our disposal. We have done a thorough research of Quality Control measures, which has helped us, catapult to a respectable position in the industry. We strive to give the best of the quality under our umbrella, and this approach has helped us to create a glorifying image in the industry.

The rich knowledge base gives us an edge in handling day-to-day situation. Also we try and do regular interactions with industry veterans so that there constant exchange of thoughts and ideas. The team has got a near perfect mix of professionals who carry their rich experience and contribute towards company's growth.

OUR SERVICES:

- ➔ Perfect blend of advanced air purification system (HVAC) design, execution and commissioning of the system
- ➔ Customized design & choice of interiors as per client requirement.
- ➔ Class -100000 to class-10 (ISO8 to ISO4)
 - Air Handling Unit, Ducts and Filter modules
 - Modular partitions, Ceilings and Doors
 - Laminar flow work station, material transfer devices, Air Shower & Garment Cubicles
- ➔ GMP-Conversions/Modifications:
 - Modification of existing manufacturing facility to meet the standards
 - Commissioning and validation as per WHO-GMP standards
 - Design and supply of custom made devices in stainless steel
 - Laboratory design, installation-till commissioning of laboratories as per GLP
- ➔ Annual Maintenance Contract:
 - AHU's, Clean rooms, Laminar Flow work stations
 - Largest inventory of air filters(20,10,5,3 microns) Pre-filters, Heap & 0.3 micron filters.
 - Periodically testing & validations of clean rooms.

Air Handling Units:

It is a device used to condition and circulate air as part of a heating, ventilating, air- control and air- conditioning (HVAC) system.

Purpose Industries:

Pharma companies, shopping malls, commercial complexes, offices, hotels etc.....



Types of AHU's

Floor Mounted Air Handling Unit:

Floor mounted air handling unit could be customized as per the customer's requirement. It is available in single tier and double tier models. It is a complete machine in its self with most modern accessories



Thermal Break Air Handling Unit:

Thermal break Air Handling Unit is thermally isolated to reduce the cooling loss. The thermal covering makes the body of the unit compatible to consume less energy thus making it cost effective.

Single Skin Air Handling Unit:

Single skin air handling unit is a low height machine. The machine is also light in weight with use of powder-coated version of Galvanized iron in its aluminum structure. It has provision for single or twin blower.

Ceiling Mounted Air Handling Unit:

Ceiling mounted air handling unit is prominently used in commercial spaces, shopping malls, offices etc where major requirement is for comfort cooling only. This machine is very cost effective and is good for small set-ups.



Vertical Air Handling



Our vertical AHU is ideal for the places where installation of traditional AHU is not a viable option. Its compact design makes it a perfect fit for such conditions.

Heat Recovery Unit



Heat recovery air handling units are mainly used in the places where fresh air is needed. Heat or enthalpy wheels are rotary air-to-air heat exchangers. Adjacent supply and exhaust air counter flow streams each flow through half of the wheel and transfer sensible and latent energy.

Air Washer Unit

An air washer is a piece of equipment that is designed to improve air quality by scrubbing the air that moves through it and adjusting humidity levels to keep the environment consistent.



Exhaust Unit

An exhaust unit is a device that removes harmful gases and particulate matter from the air. It is typically used in industrial settings, but can also be found in some commercial and residential applications. Exhaust units work by drawing in contaminated air and passing it through a series of filters. The filters remove the harmful contaminants, and the clean air is then exhausted back into the environment.



HVAC Products:



Terminal Housing

Terminal Housing Pharma is a specialized facility that serves as a central hub for pharmaceutical operations and logistics. It is designed to accommodate the storage, distribution, and processing of pharmaceutical products, ensuring their safety, integrity, and efficient management.



Fire Dampers

Fire dampers begin operation when room temperatures rise to around 165 degrees Fahrenheit, at which point the damper's fusible link will melt, causing its door to close. What that does is prevent the spread of fire, helping to keep damage to a minimum. It's important for property owners to note rooms that are habitually heated to 165 degrees or hotter will require fire dampers featuring fusible links that have higher melting points.



All Types of Air Filters

Room panel filters are a type of air filter that is used in HVAC systems to remove dust, pollen, and other pollutants from the air. They are typically made of a pleated paper or fabric material that is impregnated with a filter media, such as activated carbon or fiberglass. Room panel filters are available in a variety of sizes and ratings, and can be installed in both residential and commercial HVAC systems.



Piping of AHU

The piping of an Air Handling Unit (AHU) refers to the network of pipes and fittings that are used to transport fluids, such as air, water, or refrigerant, to and from the AHU. AHUs are commonly used in heating, ventilation, and air conditioning (HVAC) systems to condition and distribute air within a building.

SS Equipments:



Static and Dynamic Pass Boxes:

A static and dynamic pass boxes, or passive pass box, is a type of pass boxes that is used to transfer materials between two cleanrooms of equal cleanliness. It is designed to minimize the amount of personnel movement between the two rooms, and to prevent the cross-contamination of materials.

Air shower:

An air shower is a chamber that is used to remove particulate matter from personnel or objects before they enter a cleanroom environment. Air showers typically utilize high-pressure, HEPA- or ULPA-filtered air to remove dust, fibrous lint, and other contaminants from surfaces. The forceful "cleansing" of surfaces prior to entering clean environments reduces the number of airborne particulates introduced.



LAF:

A LAF unit works by drawing air through a HEPA filter, which removes 99.99% of airborne particles. The filtered air is then exhausted across a work surface in a laminar flow, meaning that the air flows in a single direction. This creates a clean environment where sensitive materials can be handled without contamination.



Dispensing Booth:

A cleanroom dispensing booth is a type of cleanroom equipment that is used to dispense, sample, and weigh powders and chemicals in a controlled environment. It is designed to protect the operator, the product, and the surrounding environment from contamination.



Sampling Booth:

A clean room sampling booth is a small, enclosed area that is used to sample materials in a controlled environment. The booth is typically made of stainless steel or other non-reactive materials, and it is equipped with a HEPA filter to remove particles from the air. The booth also has a work surface, a sink, and a waste container.



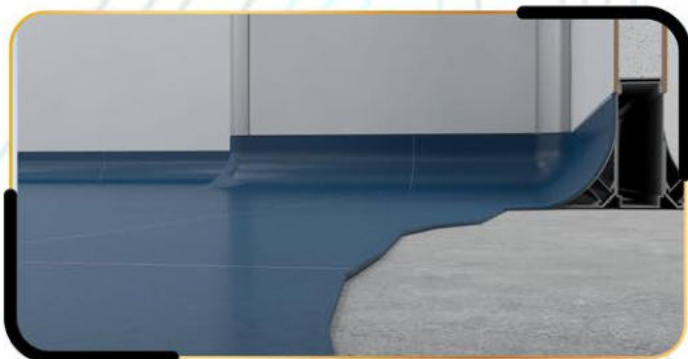


Cross Over Bench

A wide range of Stainless Steel Cross Over Benches that is widely used in various industries. This Crossover Bench demarcates the line between the slightly soiled changing-zone on entry side of the changing room and the cleaner area in front of the entry to the clean room. It is made up of high quality Stainless Steel raw material. It is available in different sizes, or as per client's specifications and requirement.

Garment Cubicles

Garment Cubicles are used for storage of clean apparel for clean rooms having hepa filter, U.V. germicidal tube to ensure keeping the garments completely free from bacterial contamination. It is available in 55 304 with additional feature for odour neutralization, infrared lamps etc.



Epoxy Flooring:

Joint less smooth finish with 2mm Screed and 1 mm Epoxy Flooring

Raised Floor Application: Class 1000 over Clean Rooms

Moc: Aluminum / Steel Pedestals Floor Panels: PVC Tiles with Preformation /Without Preformation Comply with Electrical Resistance



Vinyl Flooring:

Vinyl flooring is a product composed of several layers of different materials sandwiched together to form a highly durable, practical and affordable floor covering. The two main types of vinyl flooring are Luxury Vinyl Tiles (LVT) and vinyl roll. Both LVT and vinyl roll are made from the same materials, however, they're constructed differently to produce different effects. For example the plank format is ideal to imitate natural wood.

CLEAN ROOM PANELS:



Clean Room Panels

A clean room panel is a prefabricated panel used to construct a clean room. Clean rooms are used in a variety of industries, including manufacturing, healthcare, and research, where it is important to control the amount of dust, dirt, and other particles in the air. Clean room panels are made from materials that are smooth, non-porous, and easy to clean, and they are often coated with a sealant to further reduce the risk of contamination.



Clean Room Doors

Clean room doors are specially designed doors that are used in controlled environments such as clean rooms, laboratories, pharmaceutical facilities, and other critical areas where maintaining cleanliness, sterility, and control of particulate contamination is essential. These doors play a crucial role in preventing the entry of contaminants from the outside environment into the controlled area, ensuring the integrity of the controlled environment.

Electrical Panels:



Electrical panel is a subpanel that is typically located in a basement or garage. It is used to distribute power to various circuits in a home or business. The panel contains circuit breakers, which are devices that protect the circuits from overloads and short circuits. Electrical panel sub1 is typically labeled with the name of the electrical service provider, the panel's voltage, and the number of circuits that are protected by the panel.

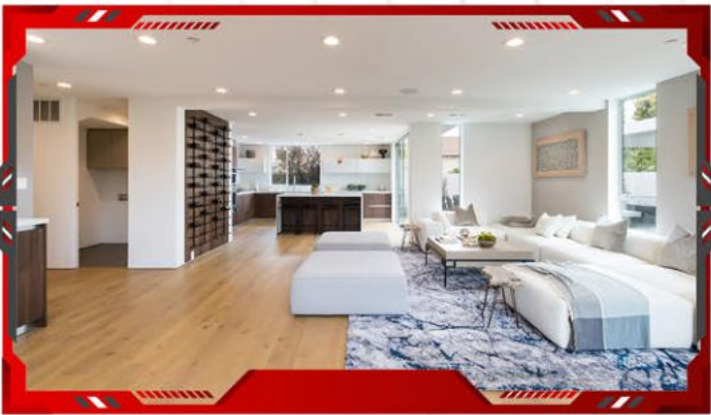
Prefabricated Cabins:



Prefabricated Farmhouse



Prefabricated Toilet



Prefabricated Living Rooms



Prefabricated Office Rooms



Prefabricated Security Cabin



Prefabricated Shop

A prefabricated construction is a house that is constructed off-site in sections, or modules, and then transported to the building site for assembly. This type of construction can offer a number of advantages over traditional stick-built construction

Prefabricated constructions can be built much faster than traditional constructions, often in as little as a few weeks. This can be a major advantage for homeowners who are looking to move into their new home quickly. Prefabricated constructions are often made from durable materials, such as concrete and steel, which can help to protect them from the elements and from damage caused by pests or natural disasters. This can give homeowners peace of mind knowing that their home is well-protected.

Our Project Process:




Prime Services:

- Turnkey projects undertaken from concept to Commissioning along with documentation for the clean room and HVAC applications.
- Design and Detail engineering of the Clean room facilities and HVAC systems as per the standards of ISO class / Schedule M /WHO / US FDA 209E and EU GGMP.
- Retrofit Projects by converting the existing areas into Clean rooms or providing effective ventilation systems.
- Supply and Installation for system integration with the necessary equipments and components like Air Handling Units, Terminal Modules Return Air Risers Grills, Diffusers, Dampers and HEPA, Pre and secondary.
- Filters of EU Standards, Dehumidifiers, DX units etc., as per GMP standards of Materials of Construction.
- Ducting of the air ducts as per the standard of IS 655 under Indian standard of metal air ducting and SMACNA standards.
- Chilled and Hot water piping with necessary manual and automatic control valves.
- Insulation of the Ducts and Piping.
- Integrating the system with Automatic controls as necessary and as required for maintaining the Parameters on line.
- Annual Maintenance contract for the clean room and HVAC systems.
- Complete Documentation including DQ, IQ, OQ, and PQ as per US FDA Guide lines.
- IOM (Installation, Operation and maintenance) manual with all the necessary certificates, technical specifications and As Built drawings
- Validation services for the existing and new systems.

Our Clients:



CoolAid Tech Solutions LLP

 H NO.8-84/15, SY.NO.689,
SAI GEETA ASHRAM ROAD,
DEVARYAMJAL VILLAGE, MEDCHAL
MALKAJGIRI DISTRICT-500014

 coolaidllp@gmail.com
lokeshm@coolaidtech.in
vamsigiri@coolaidtech.in

 +91 9100 946 784,
+91 9441 552 847

